



# ROBOTICS

## SOLUTIONS & WORKSHOPS PROVIDER

Robots| Robotic Apps| Onsite Workshops



[www.molekiu.com](http://www.molekiu.com)



[info@molekiu.com](mailto:info@molekiu.com)



Molekiu Limited



Molekiu Limited

# CONTENT

**1**

**OVERVIEW**

**2**

**ROBOTS**

**3**

**SOLUTIONS**

**4**

**WORKSHOPS**

**5**

**USE CASES**

# ABOUT MOLEKIU

---

Molekiu is one of the **leading robotics solution providers** in Hong Kong. At Molekiu, we believe there's always a better and more efficient way to perform tasks. We are devoted to providing **Robotic and Artificial Intelligence solutions** that elevate productivity and customer satisfaction. We have solid experience of implementing robotic solutions in different industries including shopping malls, offices and schools.

## OUR CLIENTS & PARTNERS

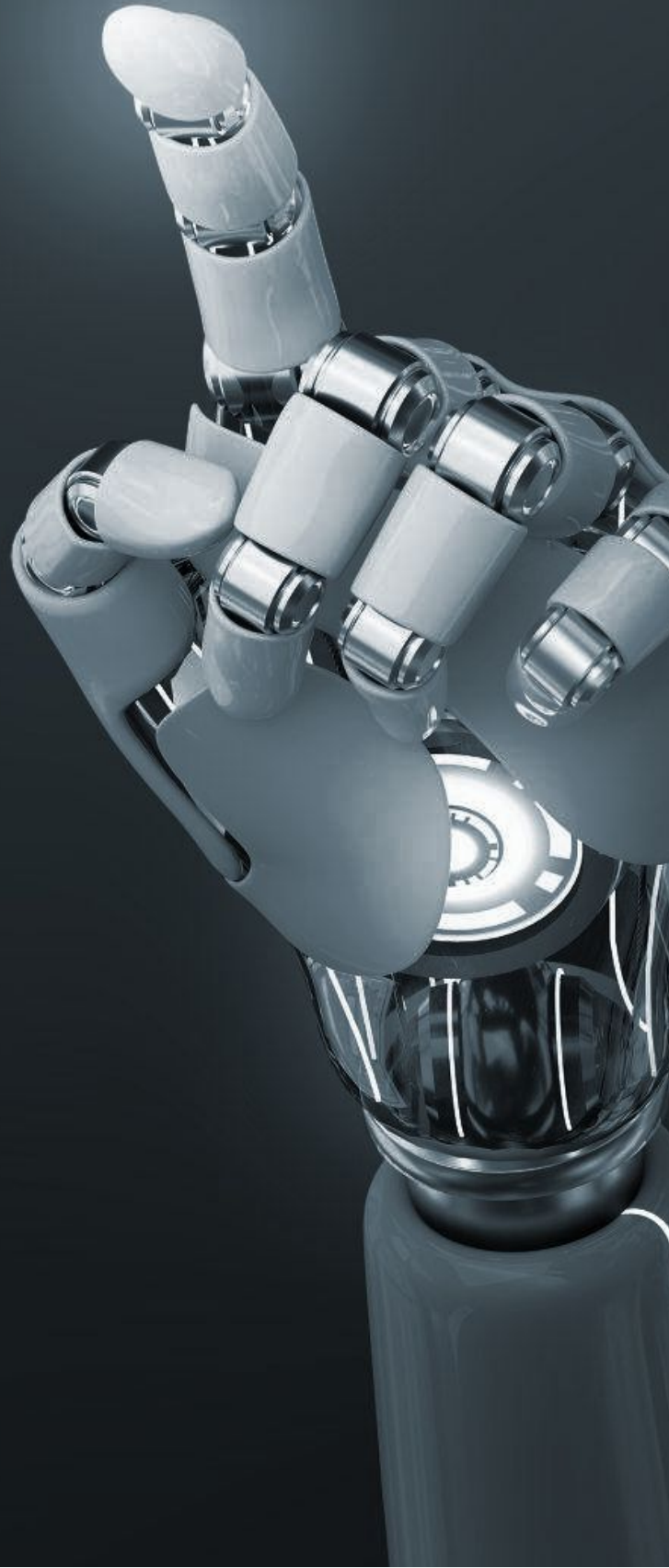
---



# ROBOTS



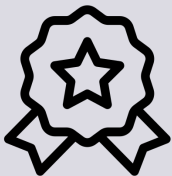
Molekiu Limited





# MINI

**MINI** is a customer service robot that provides interactive service, equipped with a 14" multi-media screen and features such as autonomous obstacle avoidance and automatic charging. It also contains Q&A and guiding functions to perform.



OS Mini is a **TOP PICK** for schools as it is small, easy to manage, and economical.



# MAXI

**MAXI** is a customer service robot that is equipped with an interactive service with a 21" multi-media display at the back and a 12.5" display in the front, autonomous obstacle avoidance, to perform customer services and visitor management.

MAXI is especially suitable for solutions that serves **multiple purposes** at the same time, as it is equipped with a large screen in the front and a back screen in the back.

# SOLUTIONS



Molekiu Limited



# ROBOTUTOR

*An intelligent and hardworking teaching assistant that teachers can work with to engage students in class.*



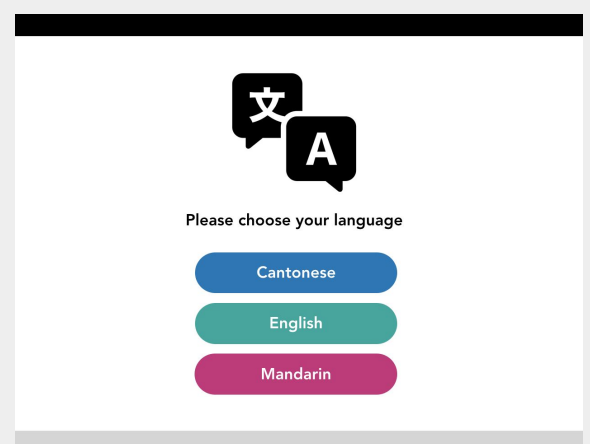
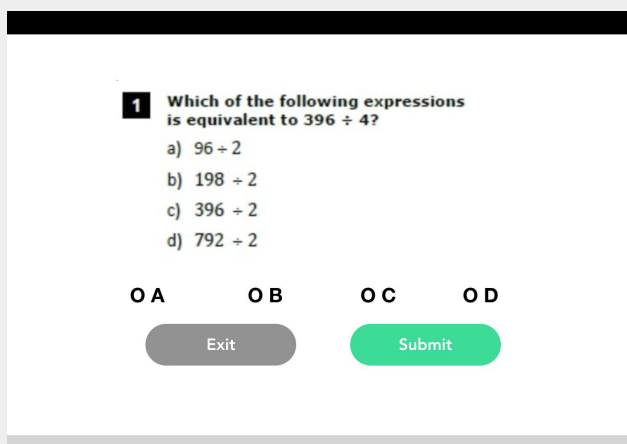
The robot can answer questions based on custom answers in multiple languages (Standard: Mandarin, English, Cantonese).



The robot can display/ask students custom multiple-choice questions in different languages.



The robot will be able to display educational posters and videos to provide a fun learning experience to students.





# SMART LIBRARIAN

*A smart librarian who knows the exact locations of the books and promotes recommended and new book.*



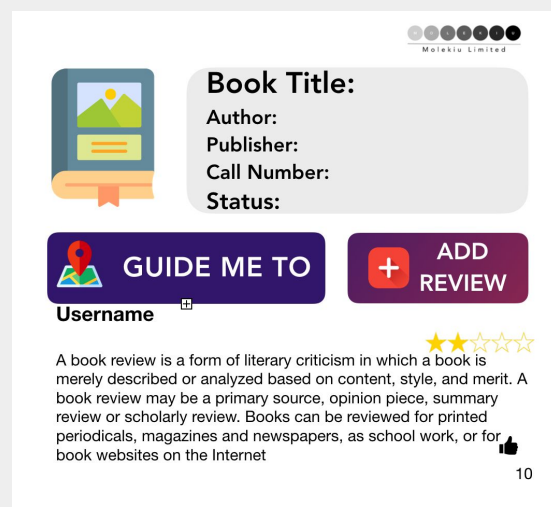
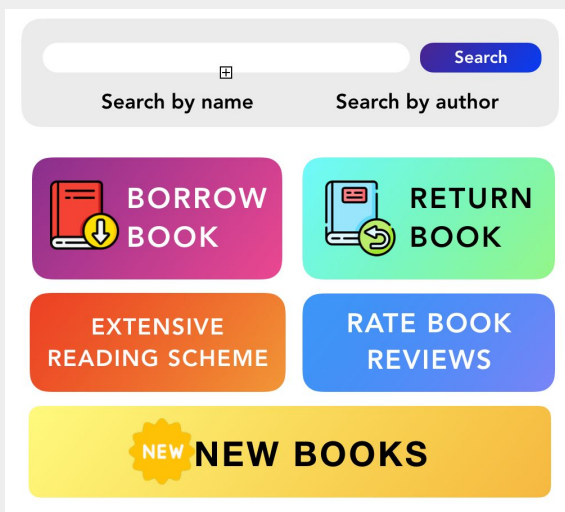
The robot can guide students or guests to the shelf on which the books are at.



The robot will be able to promote new books by displaying posters and speaking promotional messages in different languages.



Students can rate books that they have finished reading and write comments on different books with the robot.



# ROBOGUIDE

*A smart guide that can host shows, and conduct tours for guests.*



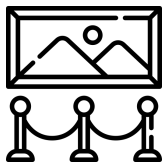
The robot can guide students or guests to specific locations easily.



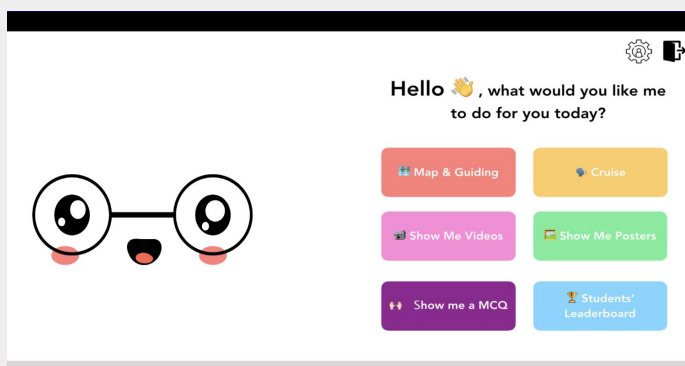
The robot can host ceremonies and functions with the pre-written script, providing a fun and unique experience for guests.



The robot can host ceremonies and functions with pre-written script, providing a fun and unique experience for guests.



The robot can conduct offline tours for guests who can't visit on-site.



# WORKSHOPS

M O L E K I U

Molekiu Limited



# Robot Basic Operations Workshop

After a robot has been purchased, we also offer workshops to teach students the different components of the robots, and the map scanning processes.

## Workshop Outline

- Robot Basic Components
- Basic Dos and Don'ts for the Robot
- Robot Map Construction Tutorial (for MINI)



## Key Takeaways

- Knowledge of the components that a robot needs to operate normally
- Hands on experience of Map Construction

# App Workshops

After a solution has been implemented, we also offer workshops to help students and teachers better understand our apps and systems, so as to allow easier management and integration, maximizing utilization.

## Workshop Outline

- All the features of the app
- All the features of the backend webpage
- Common Scenarios and troubleshooting



## Key Takeaways

- Knowledge of how to operate in an implemented robotic solution
- Knowledge of handling adhoc urgent situations related to the solution

# USE CASES



Molekiu Limited



# Use Case 1 - Smart Library Implementation

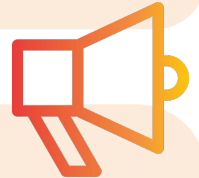
School A is interested in implementing a Smart Library Solution. They approached us, and discuss the feasibility of their ideal requirements. The following are the features that are included in their solutions.

## Guiding



- The Robot can guide students to the specific bookshelf, after students input the name of the book
- The Robot can also guide the students to books recommended in the Extensive Reading Scheme

## Book Promotion



- Everytime there's new books arrival, the Librarians would upload the promotional posters for those books onto our system, to promote these books
- The English club and Chinese Club committee members would also upload promotion posters, and messages during English and Chinese weeks.

## Comments



- Students input their comments after reading the book, and give ratings on the book
- Students also read and rate ratings written by other students

# Use Case 2 - Smart Academic Tutor Solution

School B is interested in implementing a Smart Academic Tutor solution. The following are the features that are included in their solutions.

## Question Answering



- The Responsible teacher submitted an excel file with all the questions and answer set. (Each teacher contribute 3-5 question and answer sets)
- We uploaded these questions and answers to our system, so that the robot knows how to answer these questions

## Asking Questions



- The Robot displays multiple choice questions for students to answer during recess and lunch time, providing them a fun study and learning experience.

## Displaying Educational Content



- When the Robot is idle, it displays educational videos and posters for students to watch.



M o l e k i u L i m i t e d



**38927641 / 90863083**



**info@molekiu.com**



**401-403, Cyberport 1, 100 Cyberport Road, Hong Kong**

